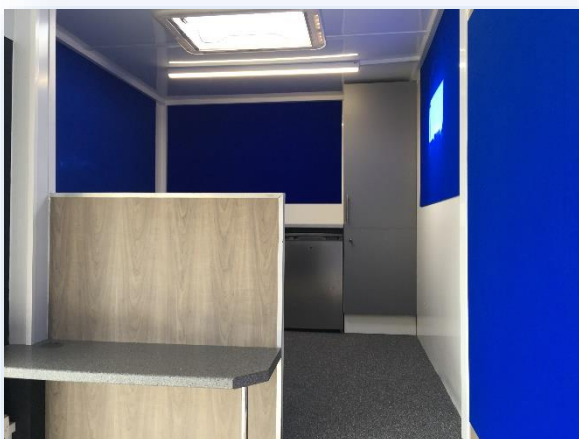


DWT E47 (3710) – 9.4m Presentation Unit



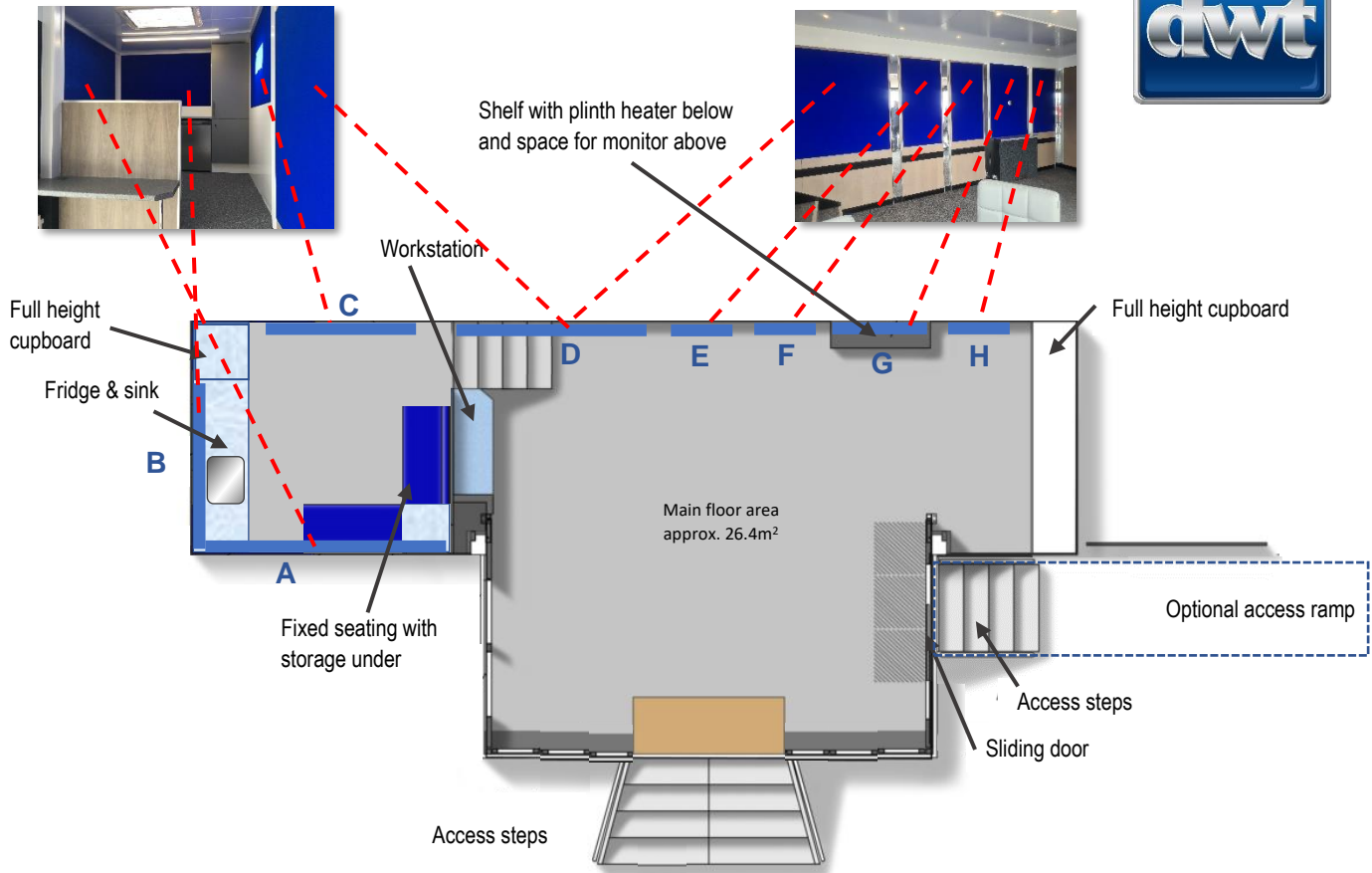
- Welcoming glazed entrance pod
- Display wing panel to rear end
- Room for extra display panels on the body
- Personnel door to side with optional ramp
- 2 x 6m flag poles – rotating arms optional
- Raised galley with storage and seating
- Optional assisted access ramp



Interior:

- Open plan interior for your own versatile layout
- 8 display panels
- Fully refitted galley
- Wall mounted monitor – optional
- Full height storage cupboard
- Carpeted throughout
- 240V electrics (32 amp ceeform, single phase supply required)

DWT E47 - Layout & Graphics Panels



Interior Graphics Panels

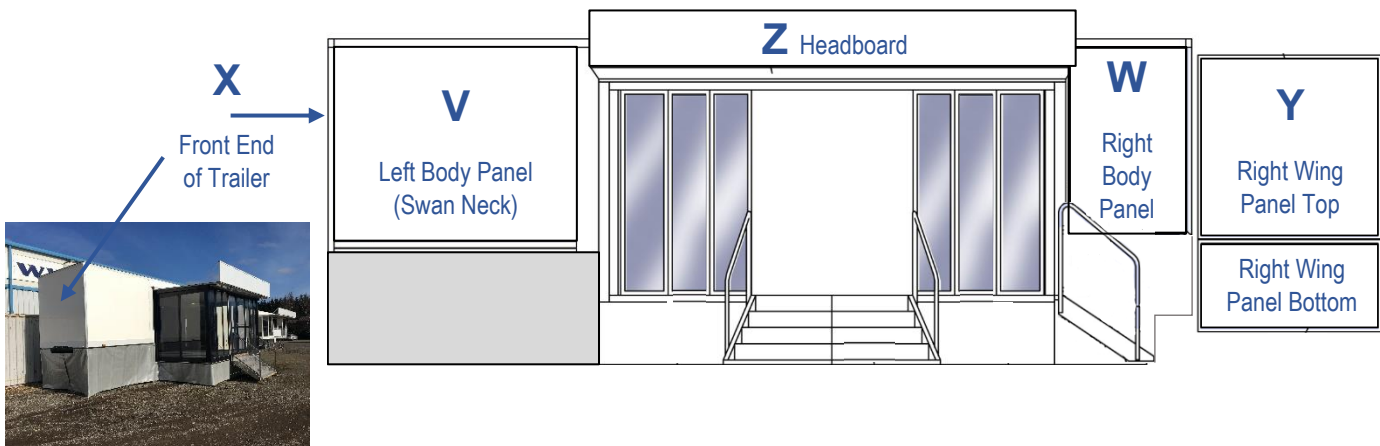
- A – 2300mm wide x 1055mm high
 - B – 1765mm wide x 990mm high
 - C – 1585mm wide x 1055mm high
 - D – 1775mm wide x 1475mm high
 - E, F & H – 730mm wide x 1470mm high
 - G – 2135mm wide x 1155mm high
- removable for monitor*

Exterior Graphics Panels

- V – 2625mm wide x 2085mm high
- W – 1275mm wide x 2080mm high
- X – 2355mm wide x 2075mm high
- Y Top – 1925mm wide x 1925mm high
- Y Bottom – 1925mm wide x 925mm high
- Z – 5000mm wide x 595mm high

Trailer Footprint

- Fully Open:
 - Length – 11.6m
 - With optional ramp – 12.9m
 - Width – 5.8m
- E & OE



DO NOT SCALE - Please note all dimensions shown are nominal and therefore may be subject to change.