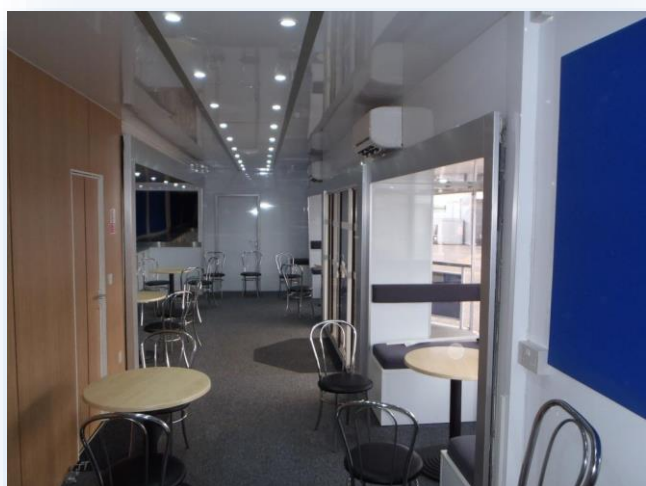


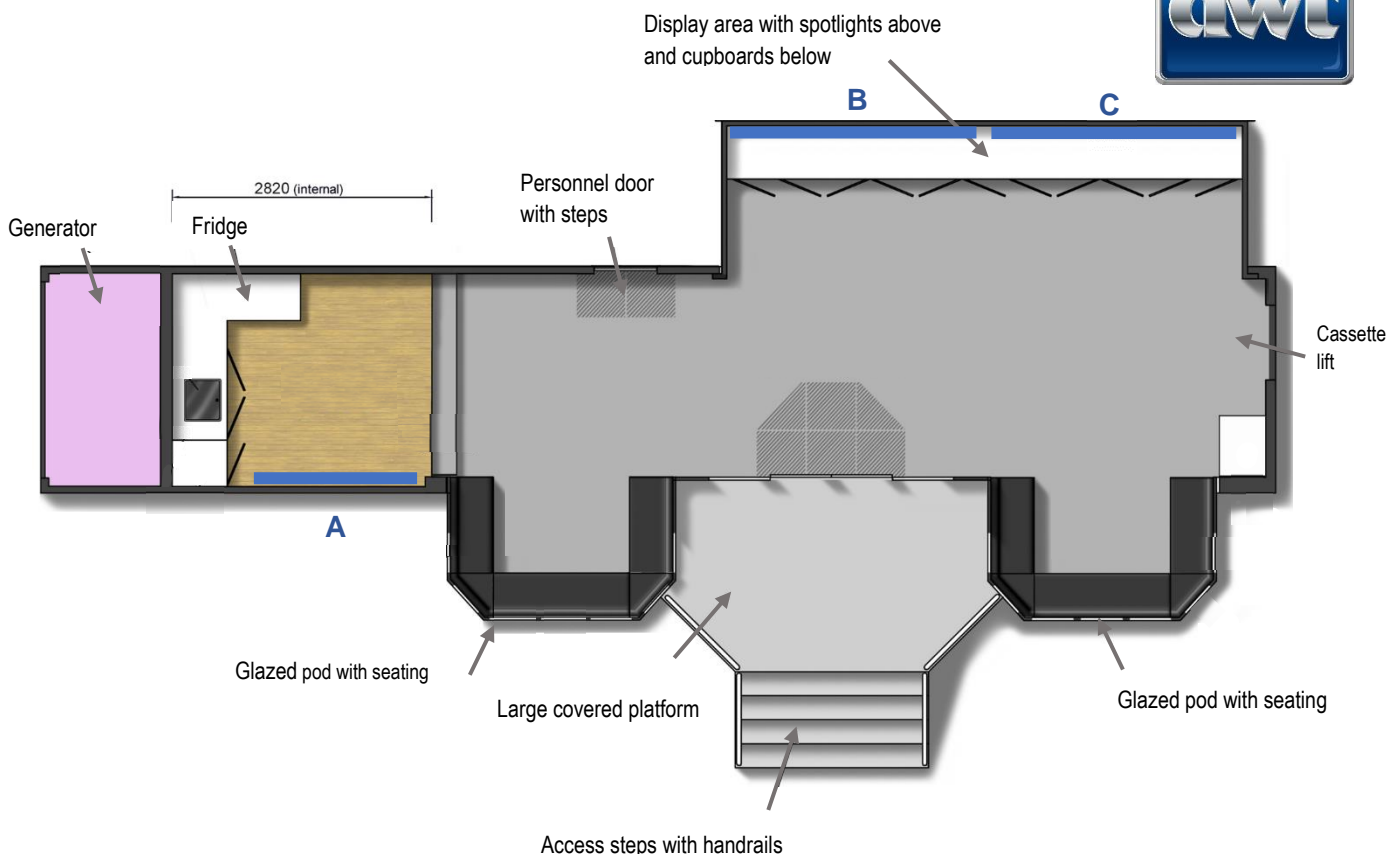
# DWT E59 (3949) – 13.4m Hospitality Unit



- Welcoming entrance platform
- Slide out glazed pods to nearside and large pod to offside
- Full length lift up headboard
- Branding opportunities on all sides
- Personnel door to offside
- Cassette lift to rear
- 2 x 3m flag poles – rotating arms optional



- Galley area in neck with vinyl flooring
- Seating in glazed pods
- Display area with spotlights
- Storage cupboards
- Carpet to main area
- Onboard silent generator
- 240V electrics package



## Interior Graphics Panels

- A – 1500mm wide x 1080mm high
- B – 2440mm wide x 1025mm high
- C – 2440mm wide x 1025mm high

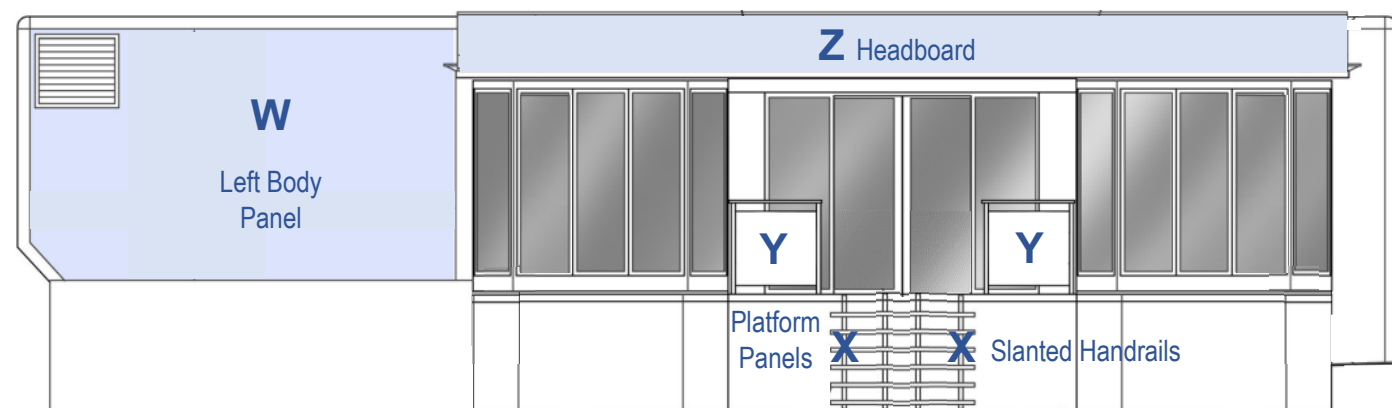
## Exterior Graphics Panels

- W – 4250mm wide x 2440mm high
- X – 1500mm wide x 770mm high
- Y – 835mm wide x 700mm high
- Z – 8650mm wide x 560mm high

## Trailer Footprint

- Fully Open:
- Length – 13.5m
- Width – 7m

E & OE



DO NOT SCALE - Please note all dimensions shown are nominal and therefore may be subject to change.